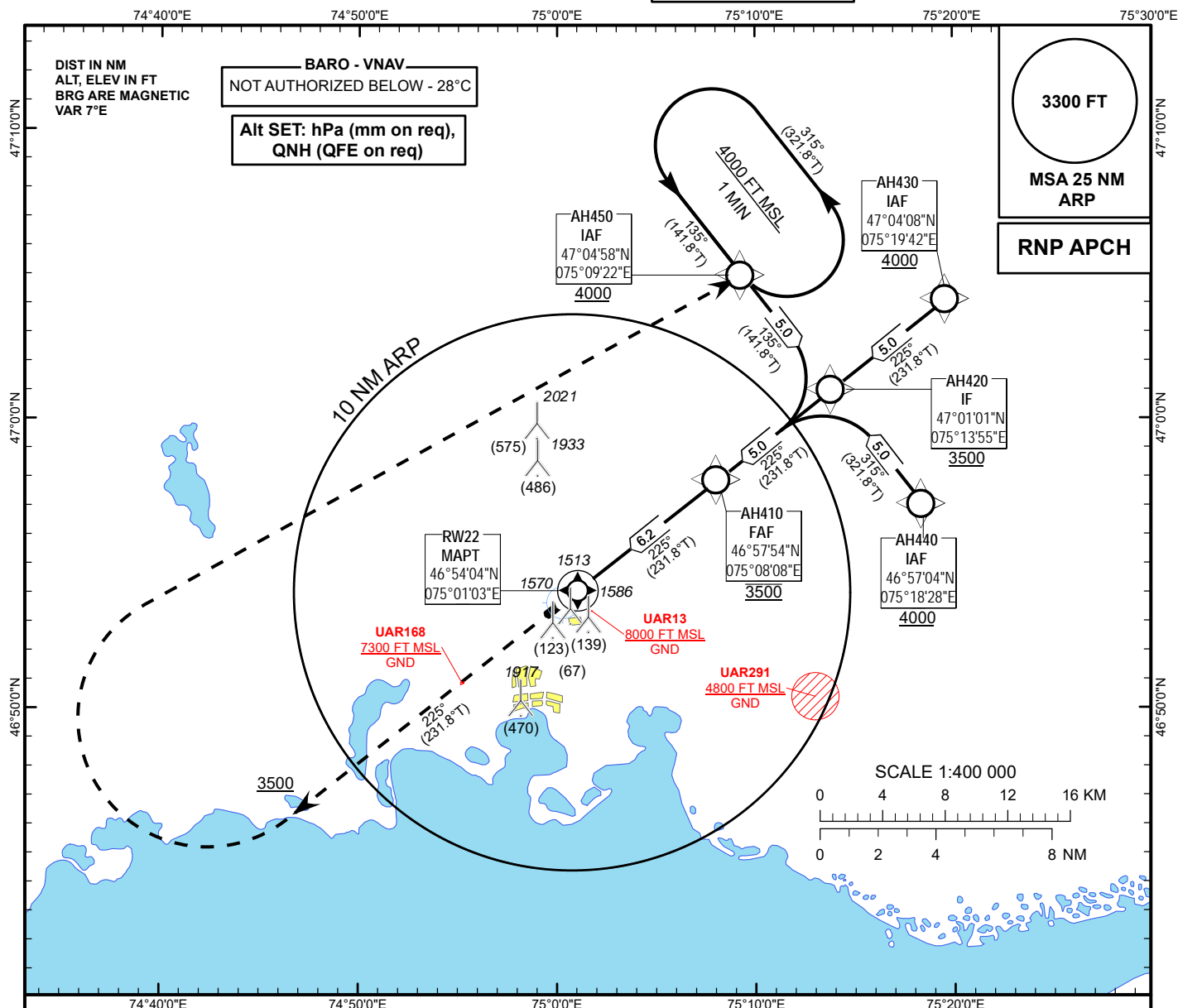


INSTRUMENT
APPROACH
CHART - ICAO

AERODROME ELEV **1447FT**
HEIGHTS RELATED TO
AD ELEV

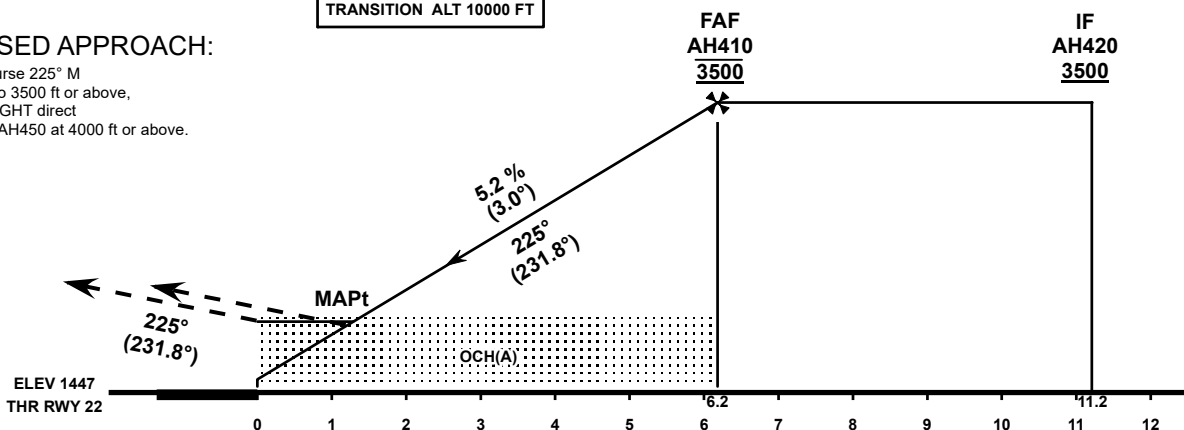
BALKASH TOWER 128.0
BALKASH ATIS (EN) 126.6
BALKASH ATIS (RU) 126.2

BALKHASH
RNP RWY 22



MISSED APPROACH:

On course 225° M
climb to 3500 ft or above,
turn RIGHT direct
to IAF AH450 at 4000 ft or above.



OCA(OCH)		A	B	C	D
Straight	LNAV	1760(320)			
	LNAV/VNAV	1644(198)	1654(208)	1664(217)	1674(274)

DIST THR	6	5	4	3	2	1
ALTITUDE	3410	3090	2770	2450	2130	1810
HEIGHT	1960	1640	1320	1000	690	370

GS	kt	80	100	120	140	160	180
Rate of descent	ft/min	420	530	640	740	850	960
FAF/FAP - THR (6.2 NM)	min:s	4:38	3:43	3:05	2:39	2:19	2:04

CHANGE: New chart.

TABULAR DESCRIPTION

RNP RWY22											
Serial Number	Path Descriptor	Waypoint Identifier	Fly - over	Course °M(°T)	Magnetic Variation(°)	Distance (NM)	Turn Direction	Altitude FT	Speed KT	VPA (°)	Navigation Specification
010	IF	AH430	-	-	+7.1	-	-	+4000	-	-	RNP APCH
020	TF	AH420	-	225(231.8)	+7.1	5.0	-	+3500	-	-	RNP APCH
010	IF	AH440	-	-	+7.1	-	-	+4000	-	-	RNP APCH
020	TF	AH420	-	315(321.8)	+7.1	5.0	-	+3500	-	-	RNP APCH
010	IF	AH450	-	-	+7.1	-	-	+4000	-	-	RNP APCH
020	TF	AH420	-	135(141.8)	+7.1	5.0	-	+3500	-	-	RNP APCH
010	IF	AH420	-	-	+7.1	-	-	+3500	-	-	RNP APCH
020	TF	AH410	-	225(231.8)	+7.1	5.0	-	@3500	-	-	RNP APCH
030	TF	RW22	Y	225(231.8)	+7.1	6.2	-	@1497	-	-3.0	RNP APCH
040	CA	-	-	225(231.8)	+7.1	-	-	+3500	-	-	RNP APCH
050	DF	AH450	-	-	+7.1	-	R	+4000	-	-	RNP APCH

WAYPOINT COORDINATES

RNP RWY22		
Waypoint Identifier		
Coordinates		
AH410	465754.00N	0750808.00E
AH420	470101.00N	0751355.00E
AH430	470408.00N	0751942.00E
AH440	465704.00N	0751828.00E
AH450	470458.00N	0750922.00E
RW22	465404.38N	0750102.81E